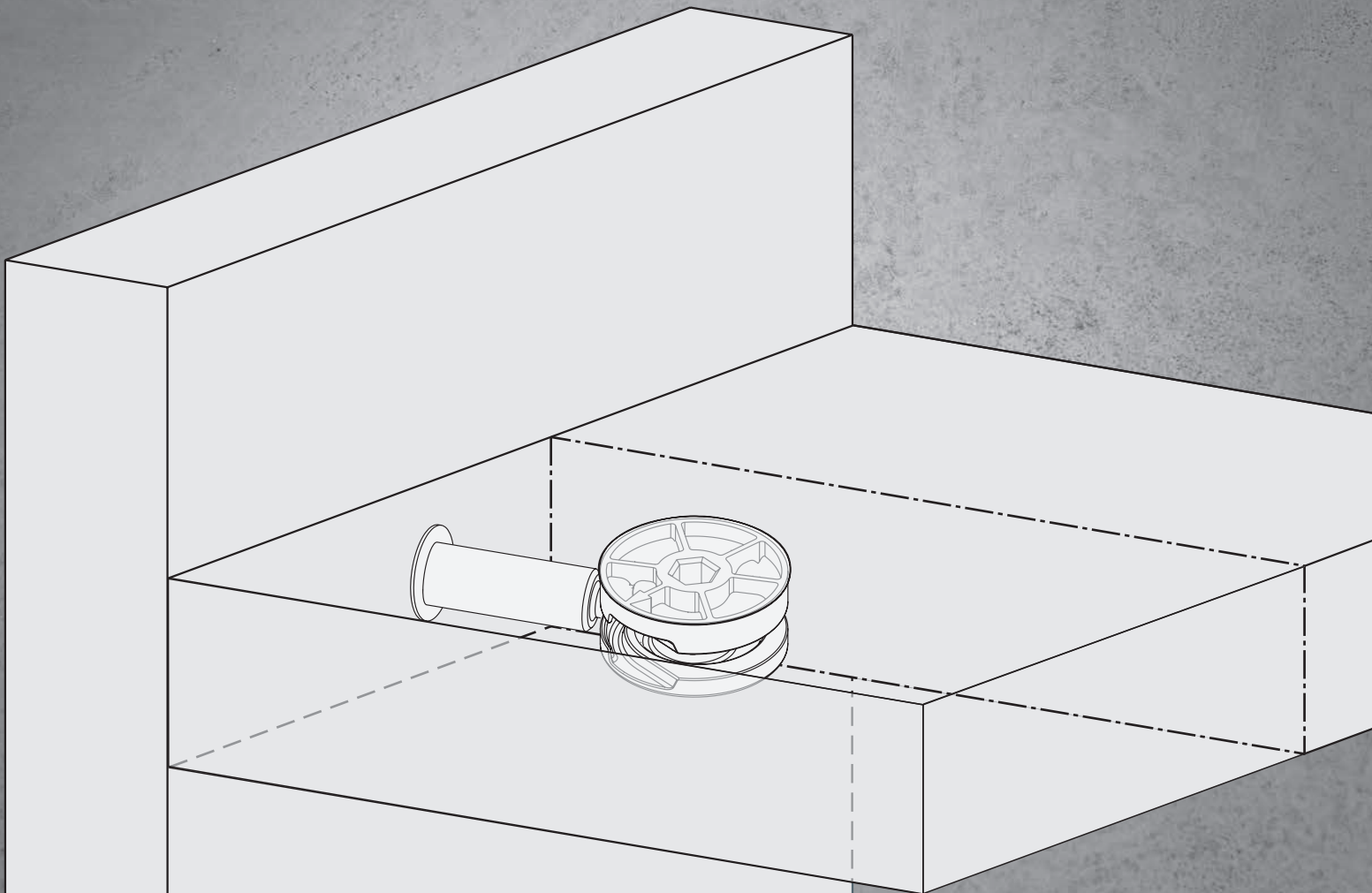


# EXCÉNTRICA Ø25

## De espiral

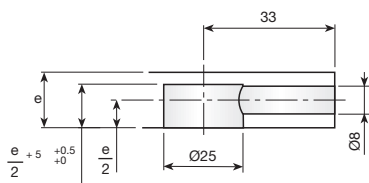
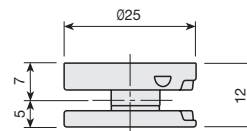
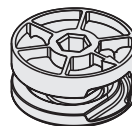
La solución a las grandes cargas y esfuerzos con un taladrado mínimo. Para tableros de 15 mm. de espesor en adelante. Evita posibles aflojamiento por vibración. Completa gama de pernos.



**1** EXCÉNTRICA Y TAPA

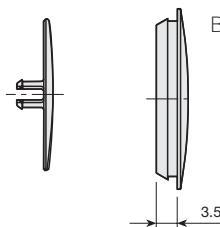
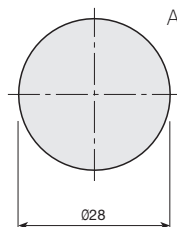
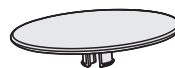
Excéntrica Ø25mm de Espiral.

Niquelado	511.525.066		
Cincado	511.525.033	500	




Tapa embellecedora Ø25.

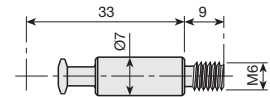
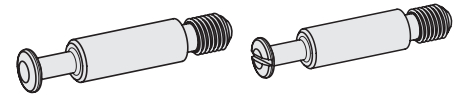
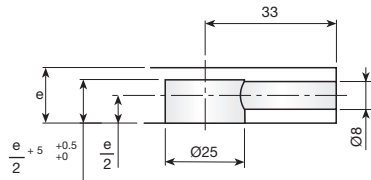
	Espesor de tablero		Tapa		
Niquelado	14 a 20mm	A	530.225.065		
Blanco	RAL 9003	>20mm	B	530.400.006	1.000
Marrón	RAL 8016	>20mm	B	530.400.010	ó
Negro	RAL 9005	>20mm	B	530.400.021	2.000
Niquelado	>20mm	B	530.400.065		
Gris	RAL 7040	>20mm	B	530.400.312	




2 PERNOS

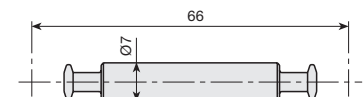
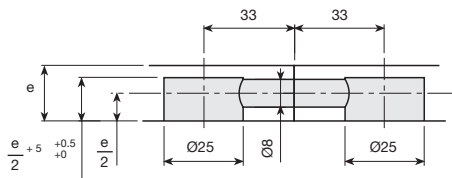
Perno de unión.

	Sin ranura	Con ranura	
Cincado	520.133.036	520.233.033	500 61.000




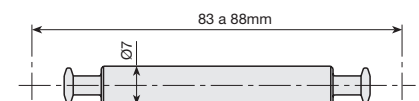
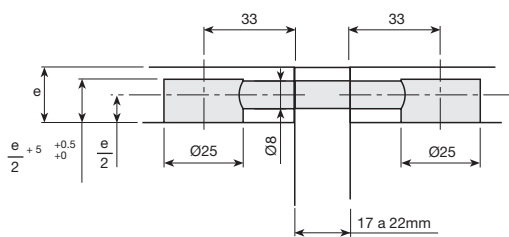
Perno de unión doble.

Cincado	528.133.034		500
---------	-------------	---	-----



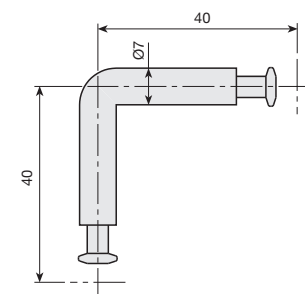
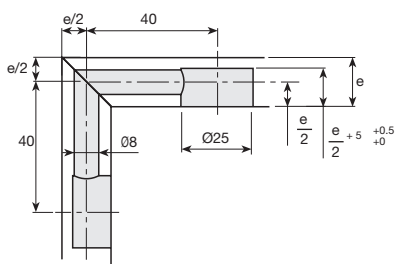
Perno de unión doble para tablero intermedio.

Cincado	528.233.031		500
---------	-------------	---	-----




Perno de unión a escuadra.


Cincado	528.333.035		500
---------	-------------	---	-----

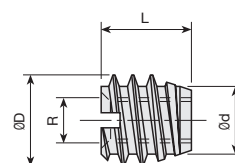


### 3 TUERCAS

Tuerca rosca madera de acero, sin cabeza.

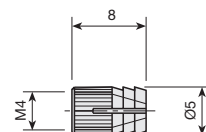
Cincado					
L (mm.)	Ød(mm.)	ØD (mm.)	1/4"	M6	
10	8	10	947.510.034	947.810.032	2.500
12	8	10	947.512.031	947.812.036	2.000
14	8	10	947.514.035	947.814.033	2.000
18	8	10	947.518.036	947.818.034	2.000
22	8	10	947.522.030	947.822.035	2.000
10	9	12	947.610.031	947.910.036	2.000
12	9	12	947.612.035	947.912.033	2.000
14	9	12	947.614.032	947.914.030	2.000
16	9	12	947.616.036	947.916.034	2.000
18	9	12	947.618.033	947.918.031	2.000

L (mm.)	Ød(mm.)	ØD (mm.)	M8	
22	11	14	948.222.030	1.500




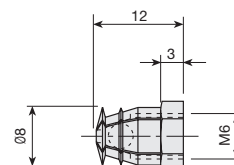
Tuerca expansible de latón.

M4	
944.805.105	2.000 ó 10.000




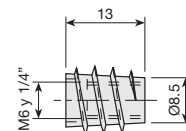
Tuerca autoexpansible de latón M6.

M6	
Ø8 x 12mm. 944.112.105	5.000




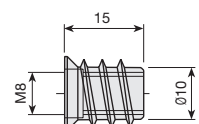
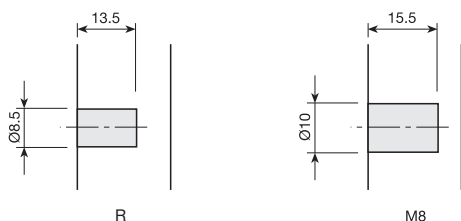
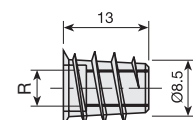
Tuerca de aletas.

1/4"	M6	
Niquelado 948.813.062		2.000
Cincado	948.913.033	



Tuerca de aletas con cabeza.

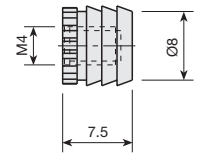
R	M4	1/4"	M6	M8	
Niquelado		948.613.061			2.000
Cincado	948.413.034		948.713.032	948.575.036	




3 TUERCAS

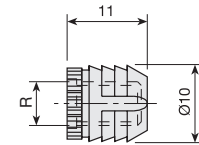
Tuerca empotrable de nylon M4 para Ø8.

			
Natural		937.004.106	2.000 ó 10.000
Marrón	RAL 8016	937.004.014	




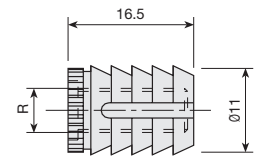
Tuerca empotrable de nylon para Ø10.

R	M6	1/4"	
Natural	937.006.103	937.014.105	2.000 ó 10.000
Marrón	RAL 8016 937.006.011	937.014.013	
Negro	RAL 9005 937.006.022	937.014.024	




Tuerca empotrable de nylon para Ø11.

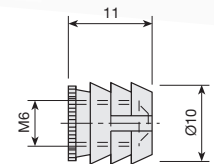
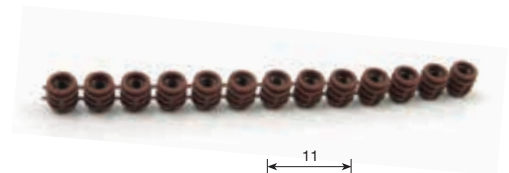
R	M6	1/4"	
Natural	937.106.100	937.114.102	4.000
Marrón	RAL 8016 937.106.015	937.114.010	




Tuerca empotrable de nylon M6 para Ø10, en tiras.

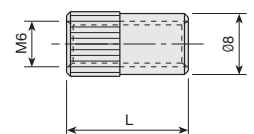
			
Natural		937.406.105	4.800
Marrón	RAL 8016	937.406.013	
Negro	RAL 9005	937.014.024	

Cada caja contiene 200 tiras.  
Se ofrecen tiras de 24 piezas; su colocación puede ser manual o por medio de pistola neumática con cargador.

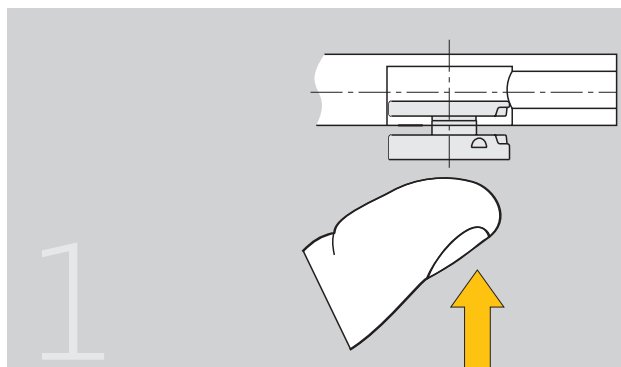


Tuerca empotrable moleteada de acero M6.

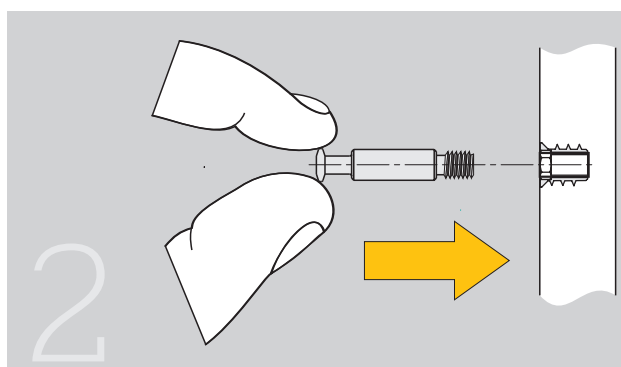
L	16mm.	18mm.	
Cincado	938.716.100	938.718.104	1.000 ó 5.000



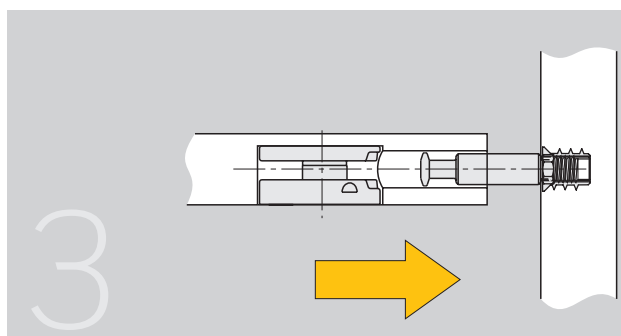
4 MONTAJE



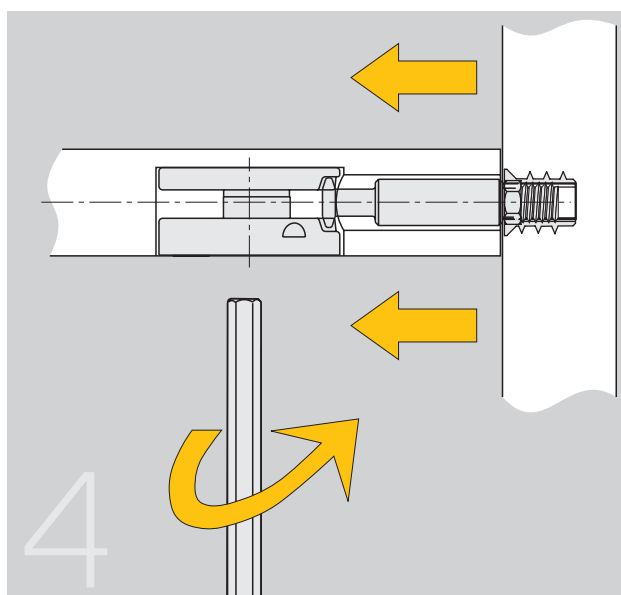
Introducir manualmente el ensamblaje excéntrica de Espiral en el mecanizado de la balda o tablero.



Introducir la tuerca en el alojamiento del costado, y posteriormente roscar el perno a la tuerca.



Alinear la excéntrica de Espiral con el perno.



Al efectuar el giro de la excéntrica, el perno se desplaza hacia la excéntrica, y conseguimos unir el lateral y el ensamblaje. Con ello se consigue un fuerte y eficaz amarre.

Para desmontar la balda siga los mismos pasos en sentido inverso.