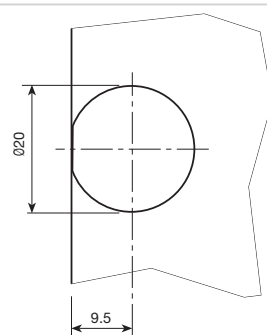



1 ENSAMBLAJES CLOCK

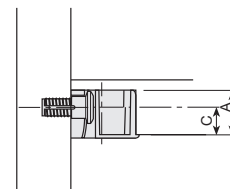
■ Ensamblajes CLOCK Ø20

- CLOCK-1: El sistema de montaje y desmontaje es muy sencillo, ya que actúa por presión.
- CLOCK-2: Mediante el giro de la leva se bloquea el tornillo y la balda queda fijada al costado.
- CLOCK-3: Al girar la leva, la lengüeta aprieta el tornillo y fija la balda.
- CLOCK-5: Actúa por presión y dispone de un embellecedor metálico.
- CLOCK-6: Al girar el tornillo expande el tetón y atrae el tablero.




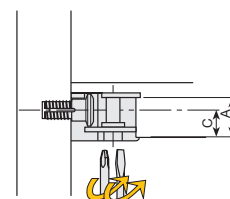
Casquillo Ø20mm. CLOCK-1.

C (mm.)	A(mm.)	Blanco RAL 9003	Marrón RAL 8016	Negro RAL 9005	Roble RAL 1002	
2	7	913.002.005	913.002.016	913.002.020	913.002.193	2.000
8	13	913.008.003	913.008.014	913.008.025	913.008.191	
9	14	913.009.005	913.009.016	913.009.020	913.009.193	
10	15	913.010.000	913.010.011	913.010.022	913.010.195	
12.5	17.5	913.012.004	913.012.015	913.012.026	913.012.192	
15.5	20.5	913.015.003	913.015.014	913.015.025	913.015.191	




Casquillo Ø20mm. CLOCK-2.

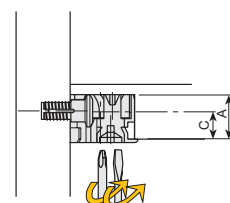
C (mm.)	A(mm.)	Blanco RAL 9003	Marrón RAL 8016	Negro RAL 9005	Roble RAL 1002	
8	13	913.108.000	913.108.011	913.108.022	913.108.195	2.000
9	14	913.109.002	913.109.013	913.109.024	913.109.190	
10	15	913.110.004	913.110.015	913.110.026	913.110.192	



Pozidriv PZ-3
Plano 6.5 X 1.2

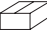
Casquillo Ø20mm. CLOCK-3.

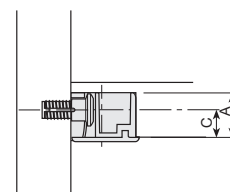
C (mm.)	A (mm.)	Cincado negro	Niquelado	
8	13	913.208.041	913.208.063	500
9	14	913.209.043	913.209.065	
10	15	913.210.045	913.210.060	
12.5	17.5	913.212.042	913.212.064	
15.5	20.5	913.215.041	913.215.063	



Pozidriv PZ-3
Plano 6.5 X 1.2


Casquillo Ø20mm. CLOCK-5.

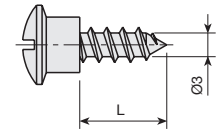
C (mm.)	A (mm.)	Niquelado	
8	13	913.408.064	2.000
9	14	913.409.066	
10	15	913.410.061	
12.5	17.5	913.412.065	
15.5	20.5	913.415.064	



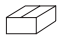
Tornillos

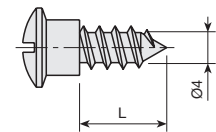
Enganche tornillo r/madera para Ø3mm.

L (mm.)	Cincado	
9	923.309.030	
11	923.311.034	500 ó 5.000
14	923.314.033	




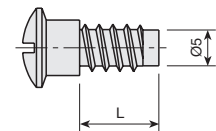
Enganche tornillo r/madera para Ø4mm.

L (mm.)	Cincado	
9	923.409.034	
11	923.411.031	500 ó 5.000
14	923.414.030	

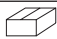


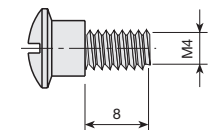
Enganche tornillo r/madera para Ø5mm.

L (mm.)	Cincado	
7,5	923.507.034	
10	923.510.033	500 ó 5.000
13	923.513.032	




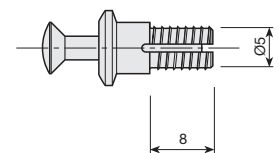
Enganche tornillo M4.

Cincado		
	923.708.030	500 ó 5.000

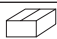


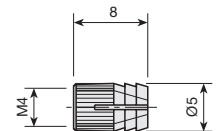
Enganche tornillo de expansión.

	Ø5mm.	
Negro RAL 9005	922.905.023	500 ó 5.000




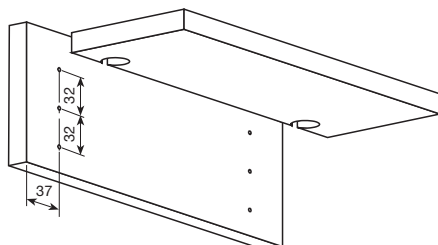
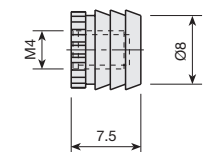
Tuerca expansible de latón M4.

		
Natural	944.805.105	2.000 ó 10.000



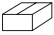
Tuerca empotrable de nylon M4.

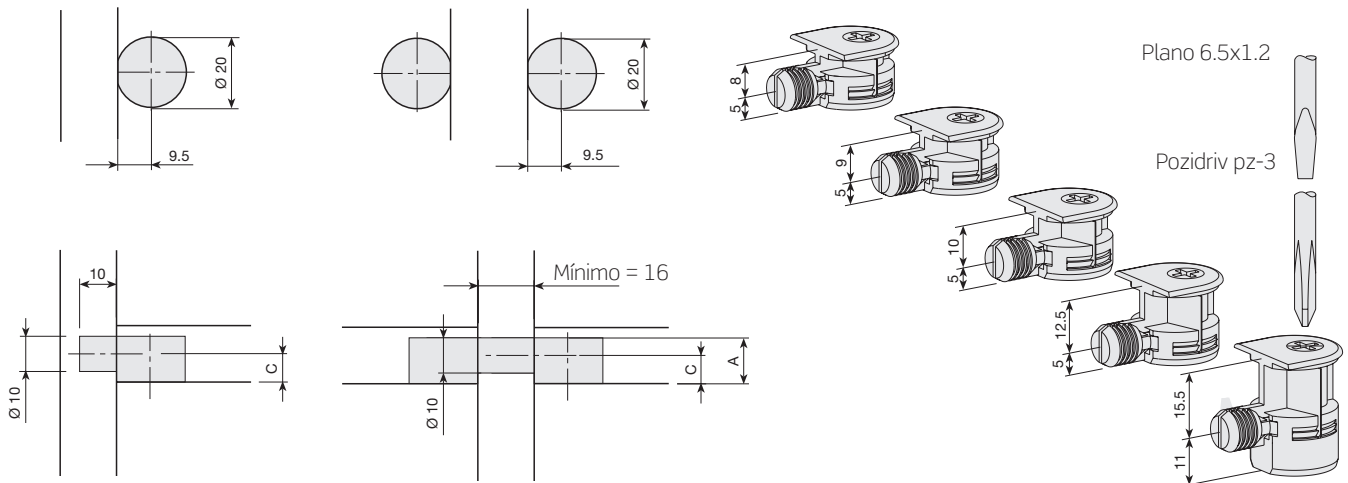
		
Natural	937.004.106	2.000 ó 10.000
Marrón RAL 8016	937.004.014	




■ Ensamblajes CLOCK-6 Ø20

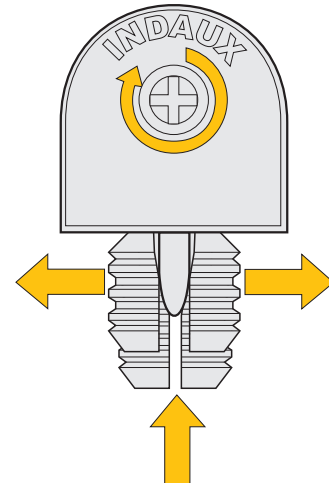
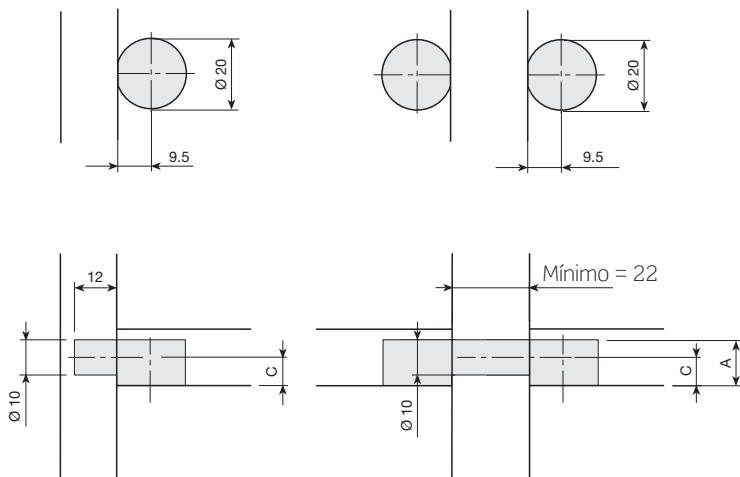
Casquillo Ø20mm CLOCK-6 corto.

C (mm.)	A (mm.)	Niquelado	
8	13	526.108.063	
9	14	526.109.065	
10	15	526.110.060	500
12.5	17.5	526.112.064	
15.5	26.5	526.115.063	



Casquillo Ø20mm CLOCK-6 largo.

C (mm.)	A (mm.)	Niquelado	
8	13	526.008.066	
9	14	526.009.061	
10	15	526.010.063	500
12.5	17.5	526.012.060	
15.5	26.5	526.015.066	

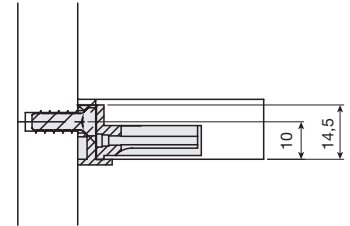
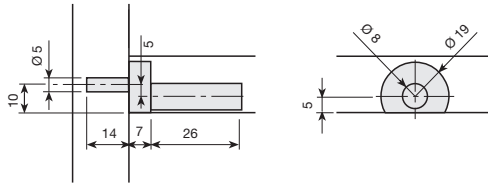


■ Ensamblajes CLOCK Ø18, Ø19 y Ø20

Casquillo CLOCK Ø19 rectangular.

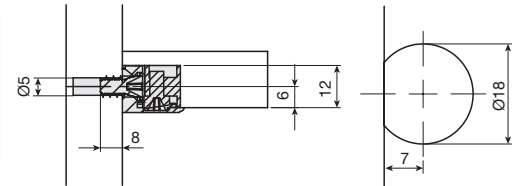
Niquelado 915.100.060 5000

Cada referencia se compone de 1 cuerpo de zamak, 1 taco de plástico, 1 eje de expansión y 1 enganche tornillo.



Casquillo CLOCK Ø18 cuadrado.

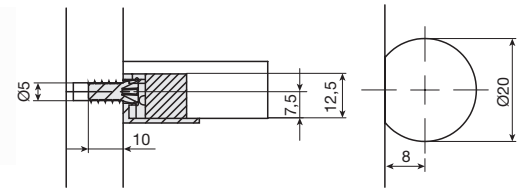
Niquelado 915.208.066 5000



Casquillo CLOCK Ø20 con tapa niquelada.

Niquelado 915.308.063 5000

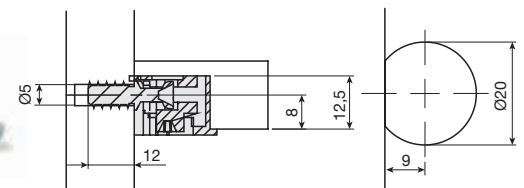
Esta referencia contiene el enganche tornillo.



Casquillo CLOCK Ø20 Cuerpo Zamak niquelada.

Niquelado 915.408.060 2500

Esta referencia contiene el enganche tornillo.



Casquillo CLOCK Ø20 Cuerpo Zamak niquelada S/32.

Niquelado 915.508.064 2500

Esta referencia contiene el enganche tornillo.

